

Tracking Hardware UK



GB100MG

LTE Cat M1/NB1 waterproof battery-mounted insurance telematics device allowing customer self-fit and lower cost installation

🔋 | 130g (4.59oz)

📏 | 134.6 × 67.5 × 14.8mm
5.30" (L) × 2.66" (W) × 0.58" (H)

🌡️ | -30°C ~ +70°C

🔌 | Operating Voltage: 8V to 32V DC
High temperature NiMH, 200 mAh

- 🔧 Self-Fit Installation
- 💧 IP67 Waterproof
- 🔌 Virtual Ignition Detection
- 📶 1Hz GNSS sampling
- 📐 1600Hz 6-Axis Accelerometer
- 🎯 Accelerometer Self-calibration
- 🚗 Driving Behavior Monitoring
- 🚚 Crash Detection & Data Packet
- 📅 Scheduled Report
- 📍 Geo-fences
- 📶 Jamming Detection
- 🚚 Tow Alarm
- 📶 OTA Control
- 📄 Up to 10,000 Buffer Messages
- 📶 BLE 4.2

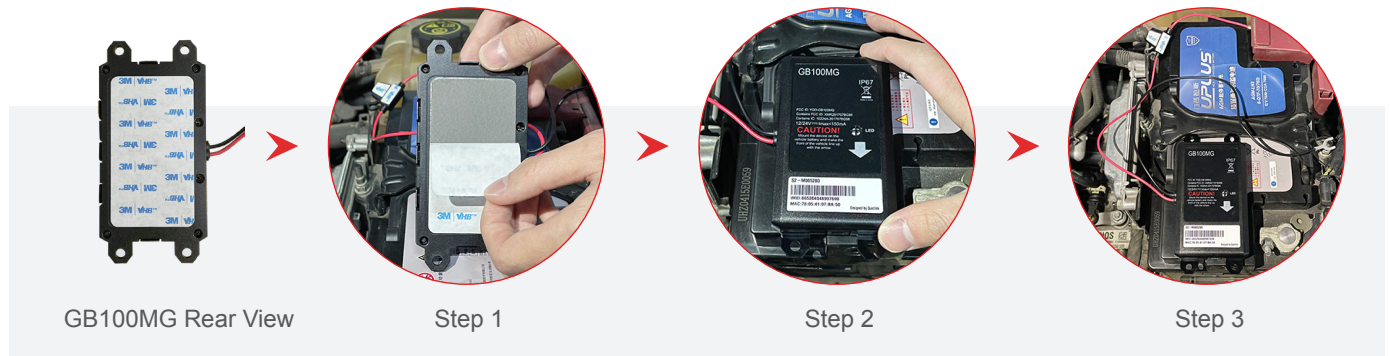
The GB100MG is the LTE version of our proven usage-based insurance telematics product GB100P. Its built-in 6-axis accelerometer allows accurate accident data sampled at up to 1600 times per second. With built-in BLE it supports wireless accessories; thus allowing the product to be flexible and suitable for applications beyond insurance data acquisition. The GB100MG is a vehicle battery mounted product specifically designed to lower the installation costs of telematics products in the usage-based insurance market. Its internal battery and waterproof enclosure maintain stable and reliable performance when installed in the engine compartment of vehicles. The GB100 series is proven to provide accurate and reliable data under the metal hood of a vehicle engine and has been used successfully in the delivery of several large UBI projects for insurers and service providers alike.



GB100MG

Region	Network/Operating Band	GNSS Type	Position Accuracy (CEP)	Certificate
Worldwide	Cat M1/Cat NB1: LTE FDD: B1/B2/B3/B4/B5/ B8/B12/B13/B18/B19/B20/ B25/B28 EGPRS: 850/900/1800/1900 MHz	Qualcomm GNSS receiver	Autonomous: < 2.5m	FCC/Verizon/ PTCRB/AT&T

Installation Guide



Interfaces

Cellular Antenna	Internal only
GNSS Antenna	Internal only
BLE Antenna	Internal only
LED Indicator	CEL, GNSS, PWR

Accessories



WTH300

BLE temperature and humidity sensor



GB100MG Download and Debug Kit

It is used for configuration, firmware upgrading and debug of GB100MG.

Part list: GB100MG_Upgrade_Tool;

DB9 USB to serial port new cable, used for configuration